

Historic, Archive Document

Do not assume content reflects current scientific knowledge, policies, or practices.



LIBRARY
RECORDED
★

*"We certainly enjoy our
outdoor fireplace!"*

IT'S SMART! IT'S USEFUL! IT'S DIFFERENT!



E. H. OLINSTEAD
SWAIN NELSON STUDIO

RE-CREATE FOR RECREATION!

★ ★ ★
*Will You
Pause a
moment—*

—to think about that
fireplace on the front
page?

Burning logs, turning
raw meat into sizzling
steaks, and snow-white
marshmallows to soft
shades of brown! These
things can happen at
your home. Yes, and
more, for what radiates
hospitality more quick-
ly than glowing embers
and “Just A Song At
Twilight?” As to size
and shape—they’re as
adaptable as a rubber
band!



A TERRACE OF STONE

Isn't there many a sultry day, when in the late afternoon the gentlemen of the office begin to think of home and the ever-welcome shower?

Then, oh! for a cool place to stretch out, and, with mind at ease, enjoy a pre-dinner snack.

Here is a cool place!

HOMELIKE FIRST IMPRESSIONS

Your grounds, especially the approach to your home, can reflect the friendly disposition of the folks who live in it.

The proper approach will make you and your friends feel “at home” even as you step from your car.

STONES and WATER and LILIES

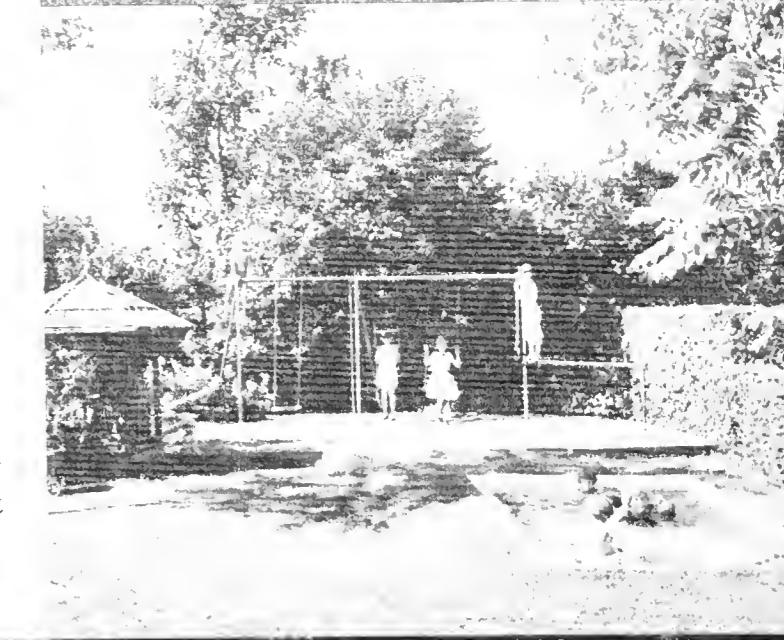
Have you ever paused in the mountains to admire a natural “rock garden”?

If craftsmanlike skill is brought into play, these three objects of nature may be combined — to give you a rock garden true to life.

THE CHILDREN'S CORNER

Swings, sand, water—the delight of all youngsters! Fresh air and healthful exercise in a spot secluded and safe.

An occasional glance from the house can assure you that “all is well”.



★ ★ ★
SWAIN NELSON & SONS CO., GLENVIEW

Glenview 87

Landscape Gardeners Since 1856

Rogers Park 1964



***“Well Mary!
here we are—***

back from a 10-day visit with Ed and Marge, and I’ll bet we spent over half the time in their ‘back yard’ as they call it!

“Do you realize what they have — in a space no larger than ours? The playground where the children have the time of their lives in the sand and on the swings. Then think of their cool terrace where we played cards in the afternoons — and didn’t you like that little nook where we ate the sizzling steaks cooked on their garden fireplace?”

“Why, those folks virtually LIVE outside!”

“Dear, it’s dawning on me that with a few changes we can make our outside just as liveable as theirs. You remember this old house before we remodeled—how we liked it except for certain old-fashioned arrangements — and how we got hold of that architect, and with his help, turned it into our home.

“I’m sure we can do the same with our garden. Let’s see if we can find someone who’ll talk this matter over with us. If he can help us, we’ll jolly well go ahead!”

★ ★ ★

SWAIN NELSON SONS CO.

Landscape Gardeners Since 1856

Glenview 87 — Rogers Park 1964



How true it is, that if semi-annual visits to the dentist were made compulsory, we'd save many teeth — and many dollars! And yet, those healers of shooting pains and twinges are hard-put to make us come to them!

And it's the same with our trees! They, too, have pains and twinges and cavities and dead nerves,— but, alas, no power to act! Only a mindful owner can care for them.

You may be the go-between betwixt your trees and their dentist. You may have them inspected to determine whether or not they need attention. And if they do, a small fraction of their value will save trees worth hundreds of dollars.

(You may have your trees inspected without charge.)

SWAIN NELSON & SONS CO.

Landscape Gardeners Since 1856

GLENVIEW 87 · GLENVIEW, ILLINOIS · ROGERS PARK 1964